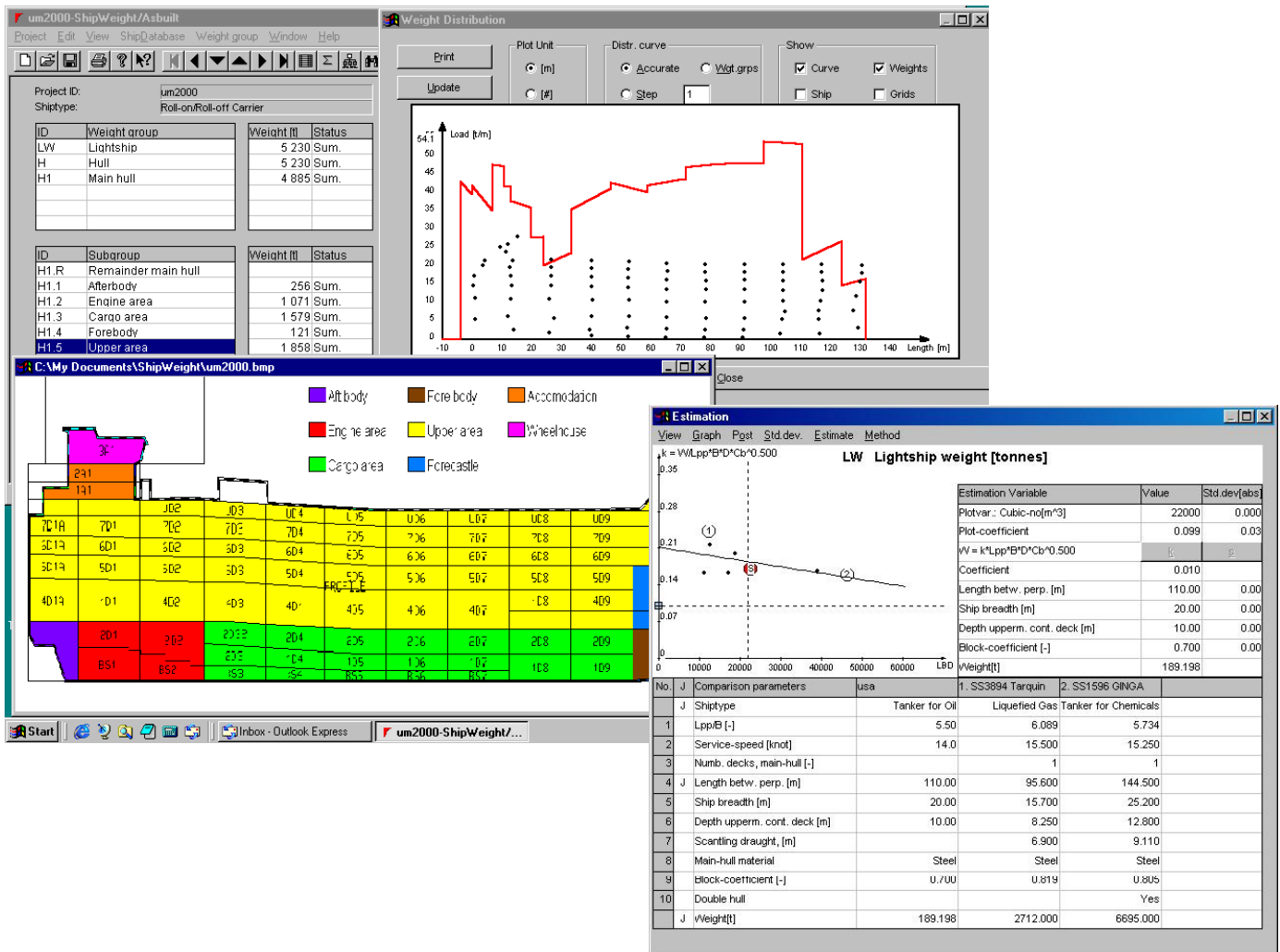


**SMM 2004
Booth # 313
Upper Floor HALL 1**

ShipWeight

PARAMETRIC SHIP WEIGHT ESTIMATION
AS-BUILT DATABASE * NATO SWBS

by **BAS Engineering AS**
www.bas.no



WEIGHT CONTROL BENEFITS

- Secure vessel performance in terms of speed, strength, stability, deadweight and sea keeping
- Supports all types of vessels
- Improve weight estimations by working with historical weight data through a systematic and statistical approach
- Avoid contract claims related to weight or weight dependent parameters
- Cost control is dependent upon weight control as the weight is the most important cost parameter for many disciplines

DESIGN SYSTEMS & TECHNOLOGIES™

Sarl NDAR

150 Rue de Goa, 06600 Antibes, France

tel +33-(0)4-92 91 13 24 / fax +33-(0)4-92 91 13 38 / ds-t@ds-t.com / www.ds-t.com

ShipWeight

PARAMETRIC SHIP WEIGHT ESTIMATION
AS-BUILT DATABASE * NATO SWBS

by **BAS Engineering AS**
www.bas.no

Weight is a most important parameter in your design. ShipWeight gives you the best tool for weight estimation, why use anything less?

Using **Work Breakdown Structures**, ShipWeight divides the ship into weight groups containing information on weight, centre of gravity and other relevant information. A specific prediction algorithm (open for editing) is attached to each group.

ShipWeight is a tool for continuous, fast and reliable weight estimation from early design to launching. The system is designed to give faster and more accurate estimates, and a better structured and more secure weight monitoring during construction. ShipWeight combines the structure, accuracy and security of a database with the calculation power of a spreadsheet.

With **ShipWeight**, weight estimation is carried out from the first day of conceptual design, going from the macro-groups to the single elements fixed weights and CGs. **ShipWeight** also makes use of external catalogues and databases, which are integrated on a custom basis.

ShipWeight is open to other programs, and can import from NUPAS, CADMATIC, NAPA STEEL, Purchasing programs, etc. as well as export to purchasing and other management software.

Some of the features of ShipWeight are:

- Statistical regression of historical weight data
- Systematic approach through weight group breakdown system
- Weight distribution values and curve, including export options
- Values of radius of gyration
- Uncertainty quantification
- Successive calculations
- Standard and user defined weight reports
- Estimation and monitoring of weight integrated in one system
- Graphical view of weight data
- User defined code structures by disciplines
- Export to MS Excel or MS Word
- Import weight data from Excel or ASCII sources
- Converting between English and SI units
- Equipment and material database
- Risk analysis
- Logging and tracking of change orders
- Standard and user defined weight calculation formulas
- Moving weight groups according to codes
- Visual check of Center of Gravity locations
- Comparison tools for various projects
- Automatic mapping to SFI codes
- NATO SWBS
- NAPA and GHS weight curve output
- Possibility of custom development
- Import from Nupas, Cadmatic, NapaSteel, etc.
- Dynamic link to AsBuilt procedures and custom forms

BAS also offers custom programming of NAPA macros and related software.

Current users of ShipWeight include shipyards, design offices, research agencies and national navies in Europe and North America.

DESIGN SYSTEMS & TECHNOLOGIES™

Sarl NDAR

150 Rue de Goa, 06600 Antibes, France

tel +33-(0)4-92 91 13 24 / fax +33-(0)4-92 91 13 38 / ds-t@ds-t.com / www.ds-t.com