

# arkitectonix

Design Review and Information Workflow Technology

## Surveyor plugin to NavisWorks

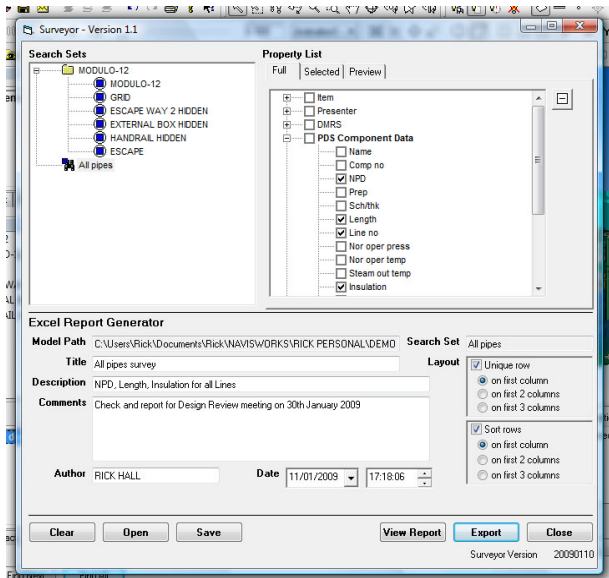
### Data Sheet

Arkitectonix® is pleased to launch **Surveyor** which is a powerful plug-in application to Autodesk®NavisWorks®, the world leading Design Review solution.

**Surveyor** is a utility for project managers and design engineers during the design phase of a project and later for use by on-site managers and construction engineers as well as maintenance engineers. This application provides an immediate return on investment by widening the scope of NavisWorks both during and beyond the design phase of a project, providing fast checking of detailed project component data.

Surveyor enables reports to be created describing selected properties for object data contained in any **Search Set** or **Selection Set**. These reports are generated in Excel format and are also saved as XML files.

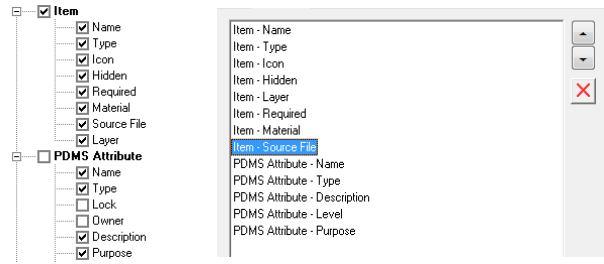
A Survey is initiated by selecting the **Surveyor** command from the **Tools** menu in NavisWorks. This opens up a Surveyor window which is effectively a Template for creating a Survey format that can be used immediately and also saved for future use. Any number of 'Templates' can be created and re-used on the same Search Sets as they evolve during the life-cycle of a project. The top section of the Surveyor window controls the selection of data to be reported. The bottom section controls the layout and formatting of content in the Excel reports.



### Surveyor 'Template' Window

When any of the **Search** or **Selection Sets** is selected in the left hand part of the window, Surveyor scans the selected data and displays the full list of properties contained in the chosen Set and lists them for each category. The required properties can then be selected by ticking the boxes and the selected properties can then be sorted into the preferred order using the **Selected** tab. The **Preview** tab enables a quick review of the first 100 records in the report so the user can see if the correct fields have been chosen and are arranged in the correct order.

For ease of use, the **Full** tab displays in Bold those categories containing several, but not all, selected properties (e.g. the **PDMS Attribute** category shown below). Those categories having all their properties selected are displayed in Bold and are also ticked (e.g. the **Item** category shown below).



Full tab list

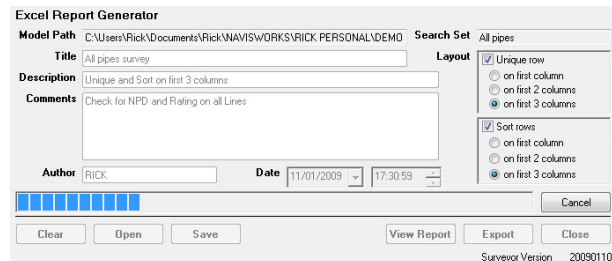
Selected tab list

Using the **Selected** tab, only the selected properties are listed and their order can be changed by dragging an individual property up or down or by using the up or down arrow buttons to the right. Individual properties can be deleted and the deletion is reflected back in the Full list.

The **Preview** tab will display the first 100 records of the report to give the user a quick check on what is included but this Preview does not apply any of the Layout controls described below for the Excel reports. The Surveyor window can be stretched or maximised to enable a clearer Preview for a larger number of fields.

Comp no	Line no	Tag no	Length	NPD	Sch/thk	Insulation	Nor oper press	Nor oper temp	Steam out temp
1	11/2-PS-380LL-012-ESS04A-M12	MONO FLANGE	11/2" 11/2"	NREDD NREDD	0MM	75.4ba_g	39 degC	0 degC	
2	FDICL17CV12	11/2" PS-380LL-012-ESS04A-M12	11/2" 11/2"	NREDD 5.160	0MM	75.4ba_g	39 degC	0 degC	
3	RODGL28AV1C	11/2" PS-380LL-012-ESS04A-M12	11/2" 11/2"	NREDD 5.160	0MM	75.4ba_g	39 degC	0 degC	
4	FDICL17CV12	11/2" PS-380LL-012-ESS04A-M12	11/2" 11/2"	NREDD 5.160	0MM	75.4ba_g	39 degC	0 degC	
5	RODGL28AV1C	11/2" PS-380LL-012-ESS04A-M12	11/2" 11/2"	NREDD 5.160	0MM	75.4ba_g	39 degC	0 degC	
6	FDICL17CV12	11/2" PS-380LL-012-ESS04A-M12	11/2" 11/2"	NREDD NREDD	0MM	75.4ba_g	39 degC	0 degC	
7	FDICL17CV12	11/2" PS-380LL-012-ESS04A-M12	11/2" 11/2"	NREDD 5.160	0MM	75.4ba_g	39 degC	0 degC	
8	RODGL28AV1C	11/2" PS-380LL-012-ESS04A-M12	11/2" 11/2"	NREDD	0MM	75.4ba_g	39 degC	0 degC	
9	TDTL3202	11/2" PS-380LL-012-ESS04A-M12	106	11/2" 11/2"	S.885 S.885	0MM	31.5ba_g	39 degC	0 degC
10	FDICL17BV02	11/2" PS-380LL-012-ESS04A-M12	11/2" 11/2"	NREDD 5.160	0MM	31.5ba_g	39 degC	0 degC	
11	FDICL17BV02	11/2" PS-380LL-012-ESS04A-M12	TG.596	11/2" 11/2"	NREDD	0MM	31.5ba_g	39 degC	0 degC
12	TDTL3202	11/2" PS-380LL-012-ESS04A-M12	106	11/2" 11/2"	S.885 S.885	0MM	31.5ba_g	39 degC	0 degC
13	FDICL17BV02	11/2" PS-380LL-012-ESS04A-M12	11/2" 11/2"	NREDD 5.885	0MM	31.5ba_g	39 degC	0 degC	
14	FDICL17BV02	11/2" PS-380LL-012-ESS04A-M12	T1-107	11/2" 11/2"	NREDD NREDD	0MM	31.5ba_g	39 degC	0 degC
15	TDTPC1202	11/2" PS-380LL-012-ESS04A-M12	109.99	11/2" 11/2"	S.81 S.81	0MM	33 ba_g	152 degC	0 degC
16	TDTPC1202	11/2" PS-380LL-012-ESS04A-M12	109.99	11/2" 11/2"	S.81 S.81	0MM	33 ba_g	152 degC	0 degC

### Preview tab report



### Report Generator

In the **Excel Report Generator** section of the Template window there are several fields which will head up the Excel report. Some of these are filled automatically including Model Path, Search Set, Author and Date/Time. The Model Path and Search Set fields cannot be edited by the user. In addition there are Title, Description and Comments fields to amplify the report.

The **Layout** area provides two important formatting controls: the 'Unique' and 'Sort' boxes activate buttons which enable deletion of duplicated rows and/or sorting of rows respectively for any of the first three columns. All these choices can be saved as part of the Template which means the user can create any number of reports based on a combination of different 1<sup>st</sup> and/or 2<sup>nd</sup> and/or 3<sup>rd</sup> field selections (using the Selected tab) together with the Layout parameters.

**View Report** initiates the process of generating an on-screen report and the progress bar displays a uniform linear progression of the time required to generate it. **Export** saves the report as an external Excel file.